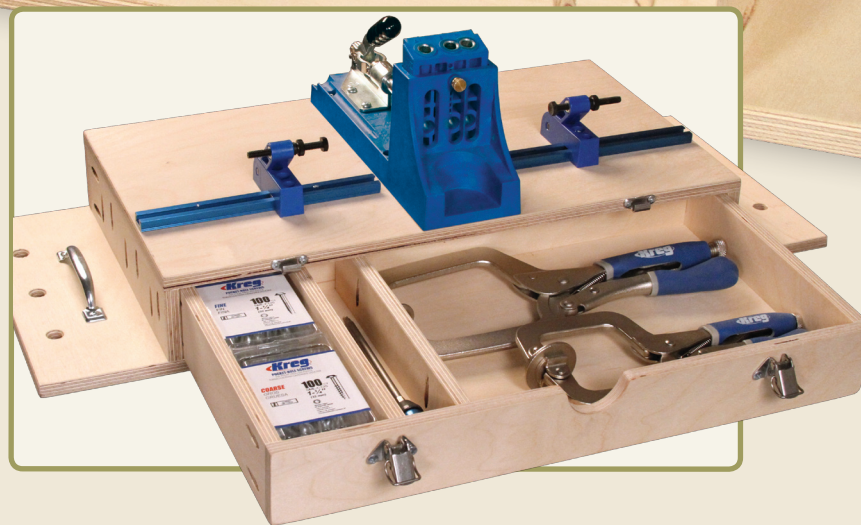
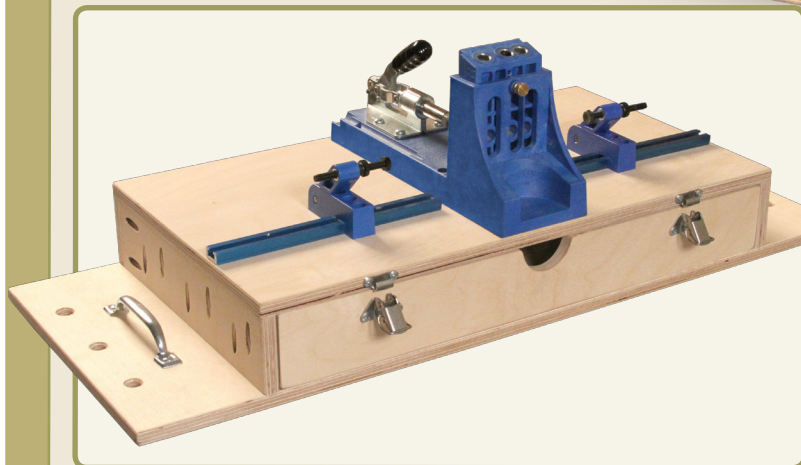


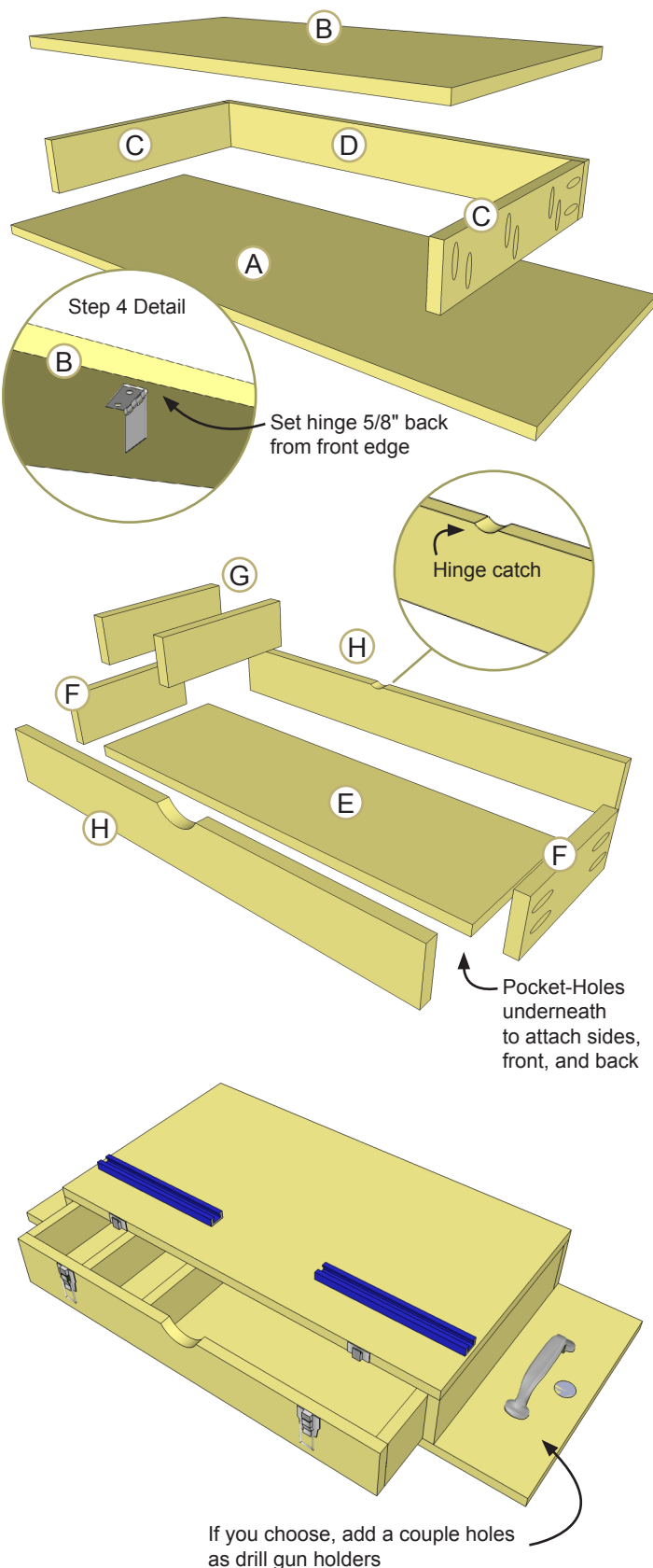


# Kreg Jig® Custom Storage Unit

Project Plan



# Assembly



## GETTING STARTED

1. The first thing to do is cut the pieces for the storage unit as shown in the Cutting Diagram. Take extra care to ensure that you are cutting to the accurate lengths and making square cuts.

2. Next, you can build the outside box that houses the drawer. Drill Pocket-Holes in the Sides (Parts 'C') and Back (Part 'D'). These holes will be used to attach the Sides to the Top and Bottom pieces. (Parts 'A' and 'B')

3. With the Pocket-Holes drilled you can attach the Sides and the Back to the Top (Part 'B')

4. Before attaching this sub-assembly to the Bottom (Part 'A') you may want to install a small hinge to the top. This will act as a drawer catch to keep the drawer from sliding out inadvertently. Place the hinge roughly 5/8" back from the front edge of the piece and close to the center.

5. With the hinge installed it's time to finish off the outside box. Join the Top, Sides, Back Assembly to the Bottom (Part 'A')

## MAKING THE DRAWER

6. With the outside box complete you can start assembling your drawer.

7. First, use a jig saw to cut an opening on your Drawer Front and Back (Part 'H'). The opening on the Front will serve as a place to pull the drawer open. On the back, make a much smaller opening. This will be used to allow you to bypass the hinge should you want to remove the drawer. Make sure you cut the notch at same distance as the hinge.

8. Now you can drill Pocket-Holes in the Bottom (Part 'E') on all 4 sides to join the Sides (Parts 'F') and the Front and Back (Parts 'H')

9. Once all your Pocket-Holes are drilled you can assemble the Sides and the Front and Back to the Bottom.

10. Finally, glue in the Inserts (Parts 'G') into your desired position. You can also Pocket-Screw the inserts in place. We spaced ours 3" apart in order to perfectly fit Kreg 100 ct. screw packages.

## FINISHING UP

11. Your Storage Unit is nearly complete. For the finishing touches, sand all of the edges for a smoother finished piece, add the hinges, handles, and you can even drill a hole in the Bottom for hanging if you choose.

12. Finally, Mount your Kreg Jig® in the center of the assembly with the back of the Jig to the drawer front. Then, cut the Mini Trak in two 8" sections and mount one on either side of the Jig. Next, place a Material Support Stop on each side by inserting a 10-32 square nut in the track and connecting with a 10-32 x 5/8" bolt. Both can be found at your local hardware store.

If you choose you can plug your Pocket-Holes with Micro Pocket-Hole Plugs and sand flush.

# Materials

## SHOPPING LIST

Quantity	Description
100	SPS-F075-100 Fine, Pocket-Hole Screws
1	Bottle of Wood Glue
1	Sheets 120-Grit Sandpaper
	Paint or Stain of preference

## PARTS TO CUT OUTSIDE

Part	Qty.	Description	Length	Width	Thickness
A	1	Bottom	28"	11"	1/2"
B	1	Top	20"	11"	1/2"
C	2	Sides	2 1/2"	10 1/2"	1/2"
D	1	Back	20"	2 1/2"	1/2"

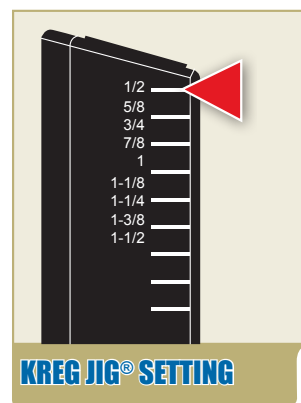
## PARTS TO CUT BOX

Part	Qty.	Description	Length	Width	Thickness
E	1	Bottom	17 15/16" *	9 1/2"	1/2"
F	2	Sides	9 1/2"	2 7/16"	1/2"
G	2	Inserts	9 1/2"	1 15/16"	1/2"
H	2	Front / Back	18 15/16" *	2 7/16"	1/2"

\* Note: You may have to adjust the dimensions of the drawer box for plywood that is undersized in order for the box to slide freely.

## SHOPPING LIST

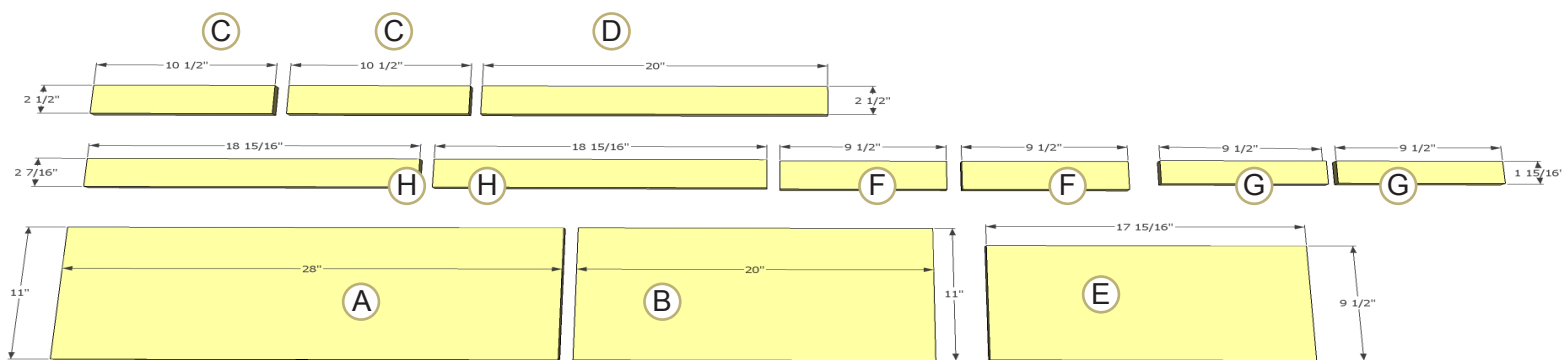
Quantity	Description
1 sheet	4' x 4' - 1/2" Baltic Birch Plywood*
2	Latch Hinges
2	Pull Handles
1	KJSS Material Support Stop
1	KMS7507 Kreg Mini Trak
1	Small Hinge for a Drawer Catch
2 each	10-32 Square Nut / 10-32 x 5/8 Bolt



In this project all Pocket-Holes will be drilled using the 1/2" settings with the Kreg Jig® Micro Pocket Drill Guide (ITEM # KJMICRODGB) and 3/4"-long Pocket-Hole Screws will be used.

Note: Make sure to reference your Owner's Manual for the proper Depth Collar Settings for the 1/2" setting.

# Cutting Diagram



You can visit us online for additional resources such as accessories, project plans, product manuals, and more tips and techniques for getting the most out of your Kreg Products.

Online: [www.kregtool.com](http://www.kregtool.com) | Phone: 800.447.8638

